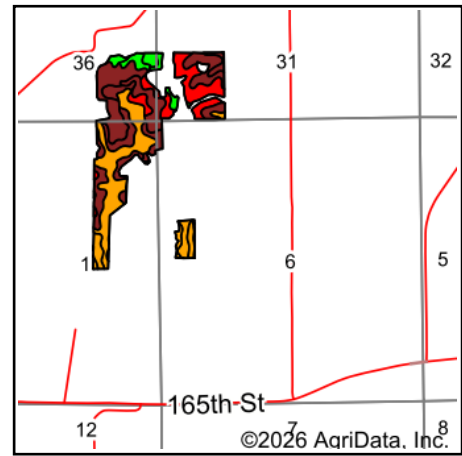
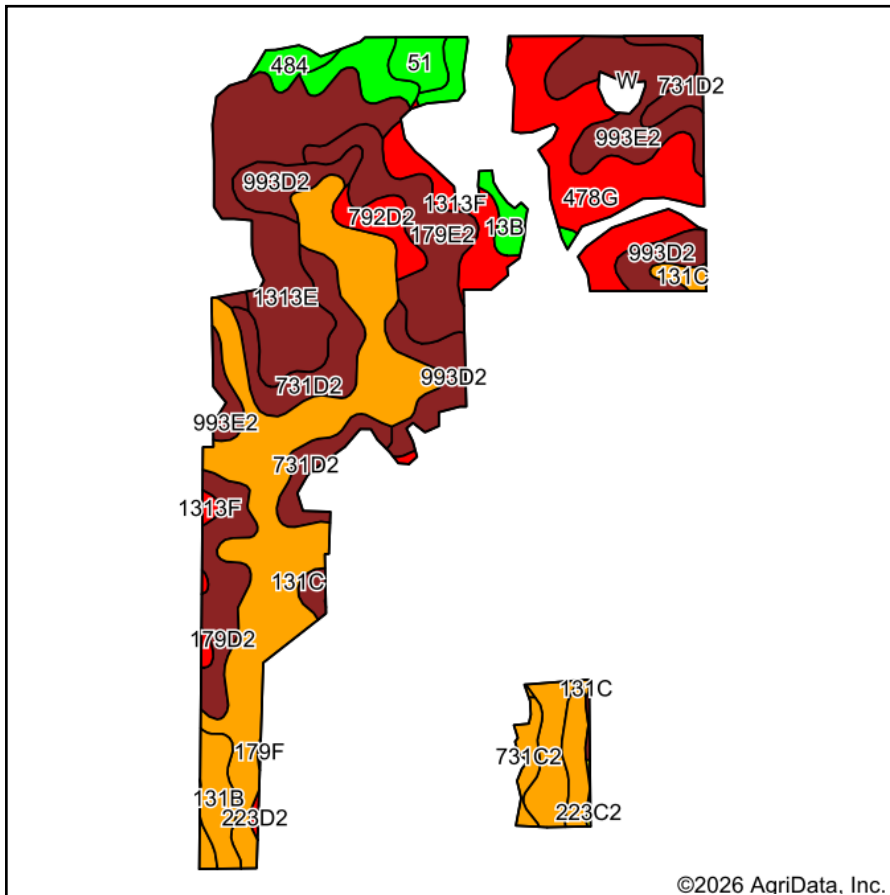


# Soils Map



State: **Iowa**  
 County: **Monroe**  
 Location: **6-72N-16W**  
 Township: **Troy**  
 Acres: **109.8**  
 Date: **6/10/2026**



Maps Provided By:  
  
 CUSTOMIZED ONLINE MAPPING  
 © AgriData, Inc. 2025 www.AgriDataInc.com



Soils data provided by USDA and NRCS.

©2026 AgriData, Inc.

Area Symbol: IA135, Soil Area Version: 33

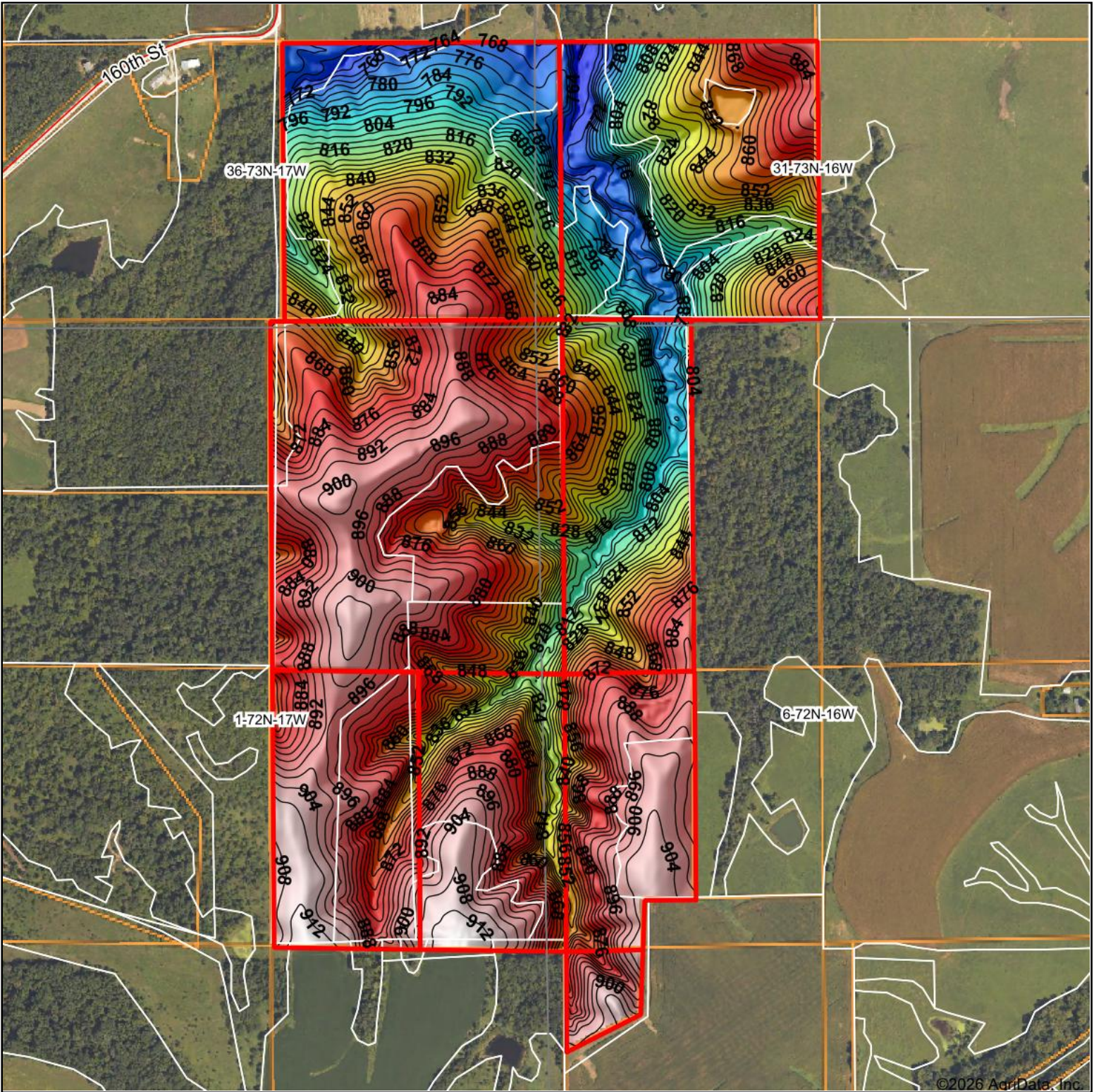
Code	Soil Description	Acres	Percent of field	CSR2 Legend	Non-Irr Class *c	CSR2**
131C	Pershing silt loam, 5 to 9 percent slopes	25.30	23.1%		IIIe	65
1313E	Munterville silt loam, 14 to 18 percent slopes	13.87	12.6%		VIIe	25
478G	Munterville-Rock outcrop complex, 14 to 40 percent slopes	11.78	10.7%		VIIe	5
731D2	Pershing silty clay loam, 9 to 14 percent slopes, moderately eroded	8.42	7.7%		IVe	38
993E2	Gara-Armstrong loams, 14 to 18 percent slopes, moderately eroded	8.08	7.4%		VIe	28
179E2	Gara loam, 14 to 18 percent slopes, moderately eroded	7.90	7.2%		VIe	26
993D2	Gara-Armstrong loams, 9 to 14 percent slopes, moderately eroded	7.85	7.1%		IVe	35
131B	Pershing silt loam, 2 to 5 percent slopes	5.20	4.7%		IIIe	70
179D2	Gara loam, 9 to 14 percent slopes, moderately eroded	4.72	4.3%		IVe	36
1313F	Munterville silt loam, 18 to 25 percent slopes	3.90	3.6%		VIIe	11
731C2	Pershing silty clay loam, 5 to 9 percent slopes, moderately eroded	2.91	2.7%		IIIe	62
876C2	Ladoga silt loam, terrace, 5 to 9 percent slopes, eroded	2.37	2.2%		IIIe	77
13B	Olmitz-Colo-Vesser complex, 2 to 5 percent slopes	2.23	2.0%		IIw	82
792D2	Armstrong loam, 9 to 14 percent slopes, moderately eroded	2.00	1.8%		IVe	9
51	Vesser silt loam, 0 to 2 percent slopes	1.58	1.4%		IIw	74
484	Lawson silt loam, 0 to 2 percent slopes	1.21	1.1%		IIw	87
1313D	Munterville silt loam, 9 to 14 percent slopes	0.22	0.2%		VIe	35
223D2	Rinda silty clay loam, 9 to 14 percent slopes, moderately eroded	0.15	0.1%		IVe	19
223C2	Rinda silty clay loam, 5 to 9 percent slopes, moderately eroded	0.11	0.1%		IVw	45
<b>Weighted Average</b>					<b>4.69</b>	<b>40.6</b>

\*\*IA has updated the CSR values for each county to CSR2.

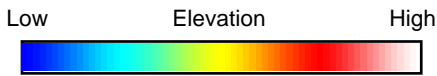
\*c: Using Capabilities Class Dominant Condition Aggregation Method

Soils data provided by USDA and NRCS.

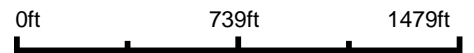
# Topography Hillshade



©2026 AgriData, Inc.



Source: USGS 3 meter dem



Interval(ft): 4

Min: 754.0

Max: 916.1

Range: 162.1

Average: 854.1

Standard Deviation: 39.47 ft



**6-72N-16W**  
**Monroe County**  
**Iowa**

Boundary Center: 41° 4' 18.47, -92° 45' 17.3



Maps Provided By:



© AgriData, Inc. 2025 www.AgriDataInc.com

Field borders provided by Farm Service Agency as of 5/21/2008.