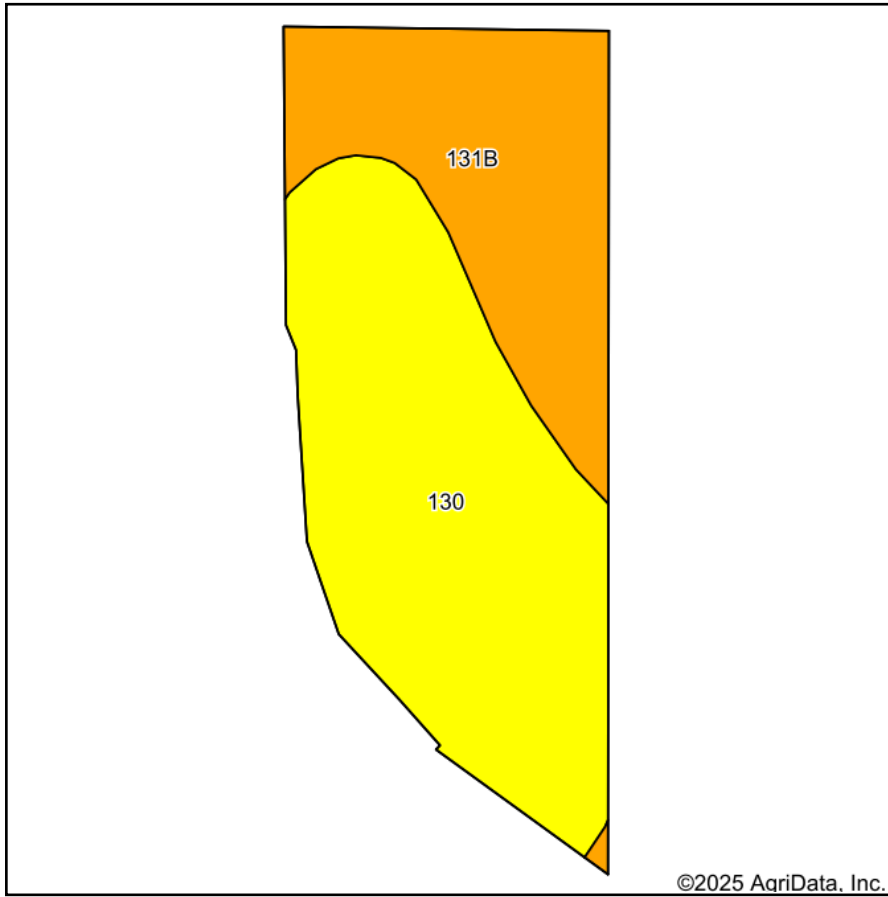
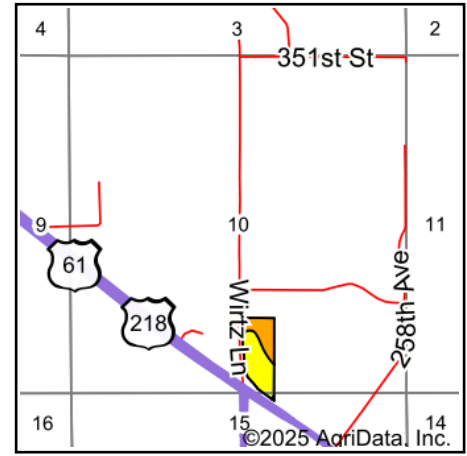


Soils Map



Soils data provided by USDA and NRCS.



State: **Iowa**
 County: **Lee**
 Location: **10-65N-5W**
 Township: **Keokuk**
 Acres: **12.13**
 Date: **9/3/2025**



Maps Provided By:



Area Symbol: IA111, Soil Area Version: 33							
Code	Soil Description	Acres	Percent of field	CSR2 Legend	Non-Irr Class *c	CSR2**	CSR
130	Belinda silt loam, 0 to 2 percent slopes	7.69	63.4%		IIIw	47	63
131B	Pershing silt loam, 2 to 5 percent slopes	4.44	36.6%		IIIe	70	67
Weighted Average					3.00	55.4	64.5

**IA has updated the CSR values for each county to CSR2.

*c: Using Capabilities Class Dominant Condition Aggregation Method