

Bernard and Zita Rogers Farm
estimated acres tilled prior to Bernard's
death in March, 2007 — 100.9 A

South 80	18.1
middle 80, east $\frac{1}{2}$ (map #1)	14.1
middle 80, west $\frac{1}{2}$ (map #2)	23.2
north 80, east $\frac{1}{2}$	17.3
north 80, west $\frac{1}{2}$	28.2
	<hr/>
	100.9 A

estimate prepared April 7, 2008
by Ron Sorensen and Marlys Rogers

WEST 1/2 North 80 North Line EAST 1/2 North 80

west portion

North 80:
1981 Tile

1 inch = 264 feet

No TILE 2.4 AC

80

77

77

77

77

77

77

77

77

77

77

77

77

77

77

77

77

77

77

77

77

77

77

77

77

77

77

77

77

77

77

77

77

77

77

77

77

77

77

325

152

312

312

312

312

312

312

312

312

312

312

312

312

312

312

312

312

312

312

312

312

312

312

312

312

312

312

312

312

312

312

312

312

312

312

312

312

312

312

312

312

312

312

312

312

312

312

312

312

312

312

312

312

312

312

312

312

312

312

312

312

312

312

312

312

312

312

312

312

312

312

312

312

312

312

312

312

312

312

312

312

312

312

312

312

312

312

312

312

312

312

312

312

312

312

312

312

312

312

312

312

312

312

312

312

312

312

312

312

312

312

312

312

312

312

312

312

312

312

312

312

312

312

312

312

312

312

312

312

312

312

312

312

312

312

312

312

312

312

312

312

312

312

312

312

312

312

312

312

312

312

312

312

312

312

312

312

312

312

312

312

312

312

312

312

312

312

312

312

312

312

312

312

312

312

312

312

312

312

312

312

312

312

312

312

312

312

312

312

312

312

312

312

312

312

312

312

312

312

312

312

312

312

312

312

312

312

312

312

312

312

312

312

312

312

312

312

312

312

312

312

312

312

312

312

312

312

312

312

312

312

312

312

312

312

312

312

312

312

312

312

312

312

312

312

312

312

312

312

312

312

312

312

312

312

312

312

312

312

312

312

312

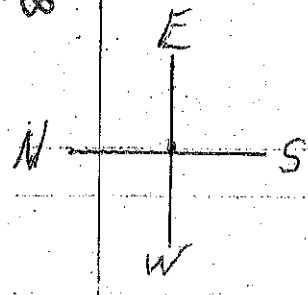
312

312

312

312

MAR 29-80
 80



April - 1980
 1 inch = 264 ft.

Buildings.
 Silo

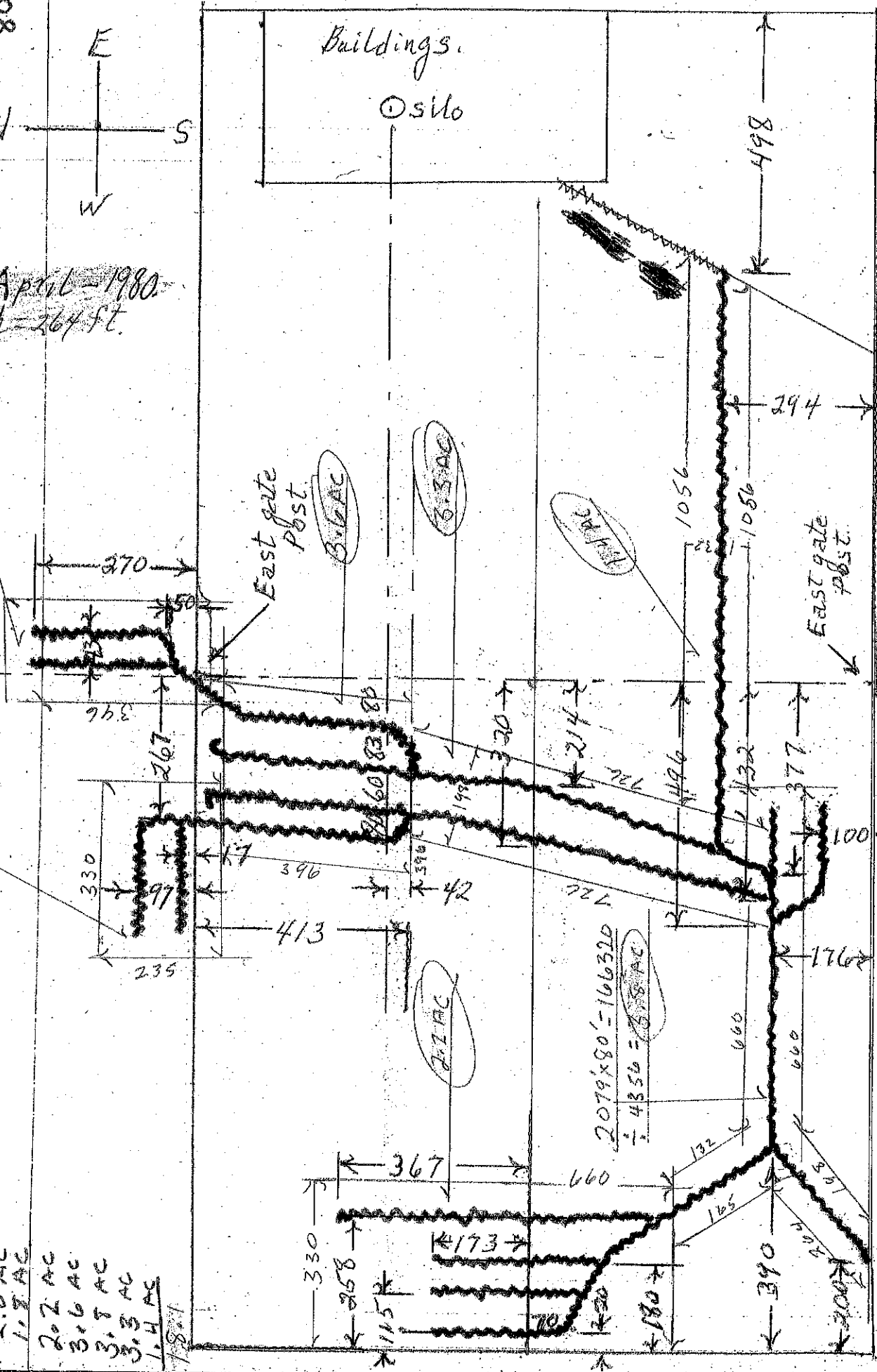
(2)

1.8 AC

2 AC

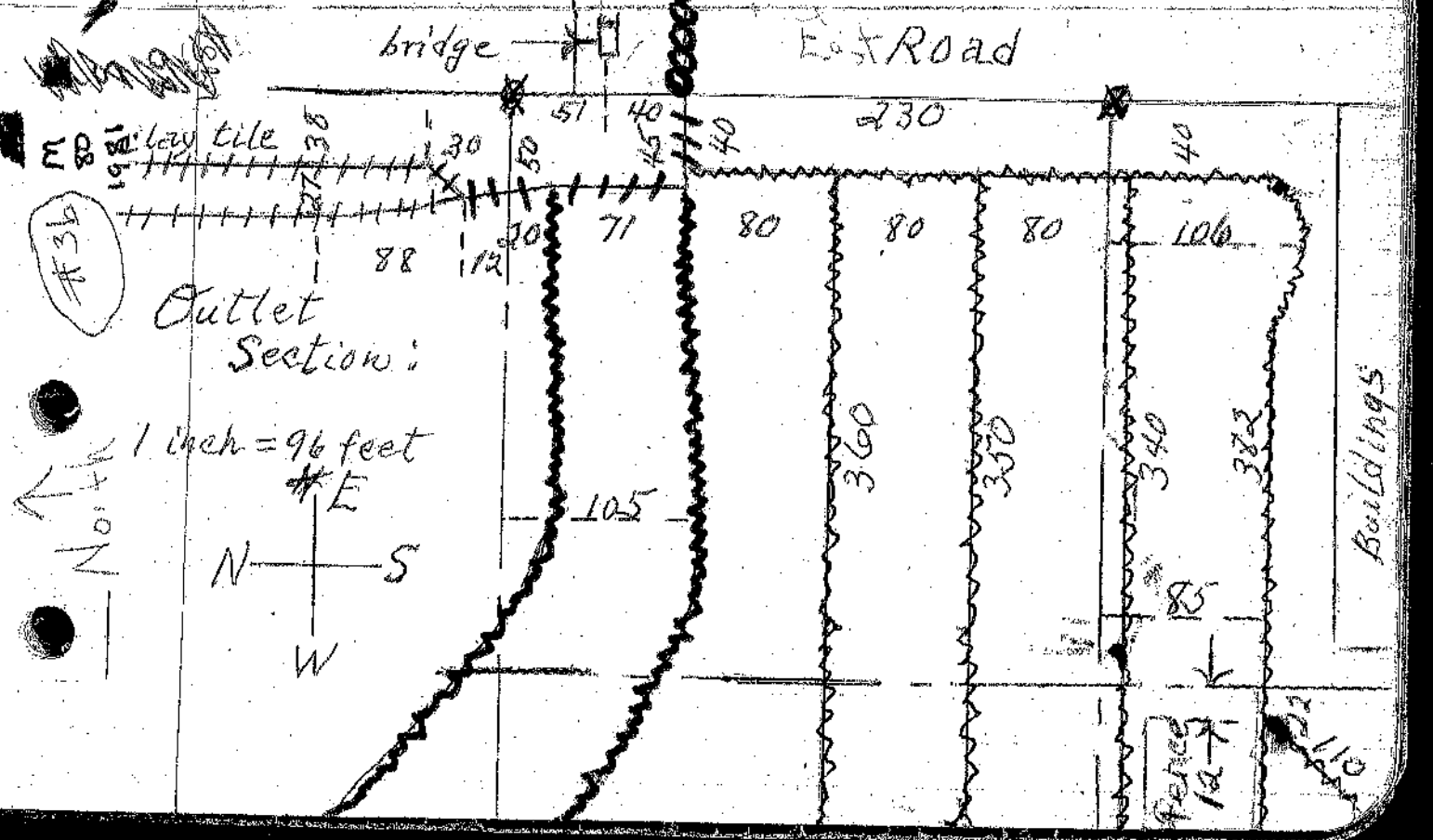
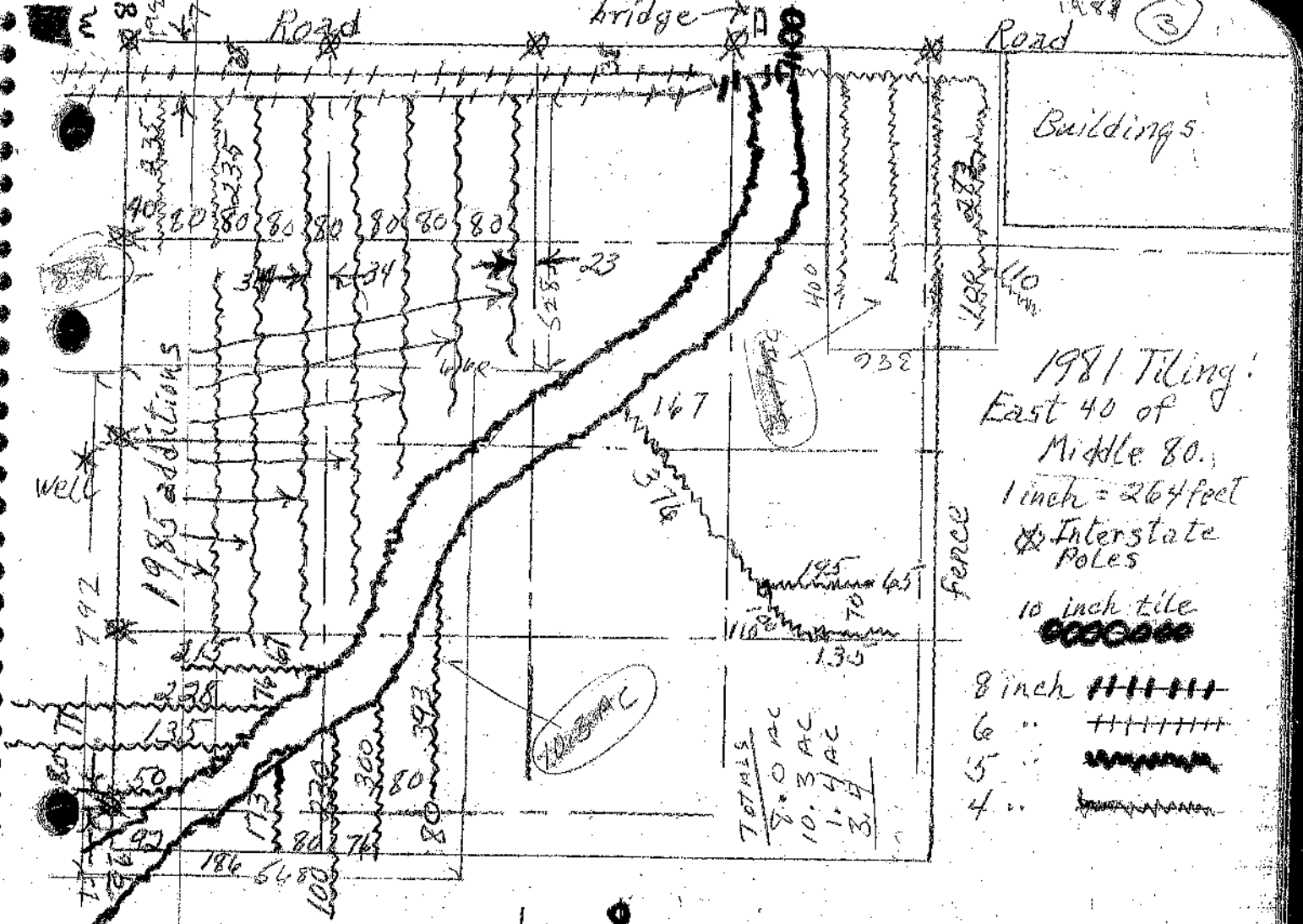
TOTALS SOUTH & MIDDLE 80'S

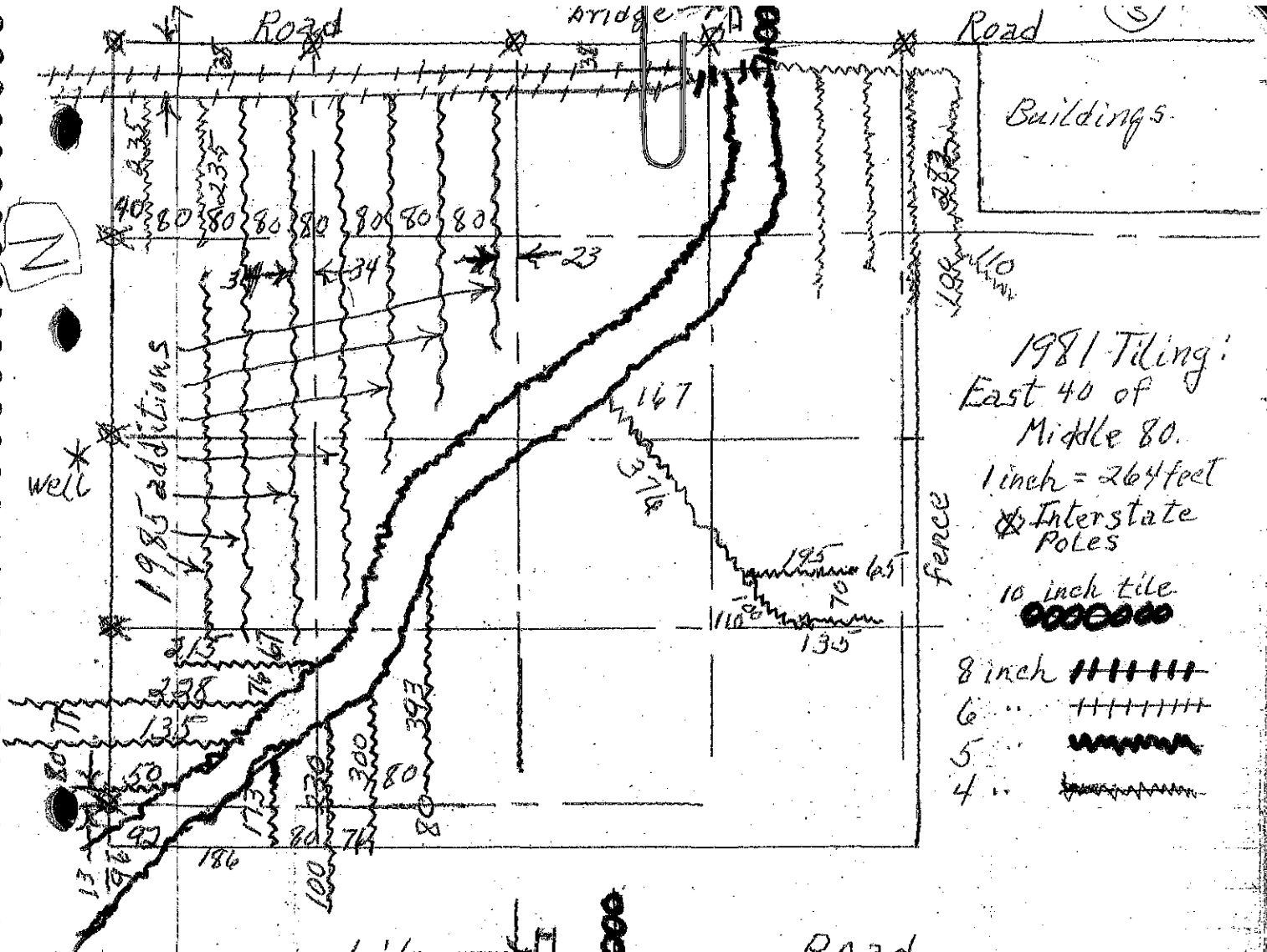
- 2.0 AC
- 1.8 AC
- 2.2 AC
- 3.6 AC
- 3.8 AC
- 3.3 AC
- 1.4 AC
- 18.4



South Road

$$\frac{2079 \times 80}{4356} = 38.18 \text{ AC}$$





3a bridge →

East Road

325

329

320

1981 Tiling
5 inch matts
1 inch = 160 feet.

312

312

312

309

30 →

71

105

85

25

210

200

120

160

35

26 →

160

150

95

105

13 →

23

41

95

71

28

135

96

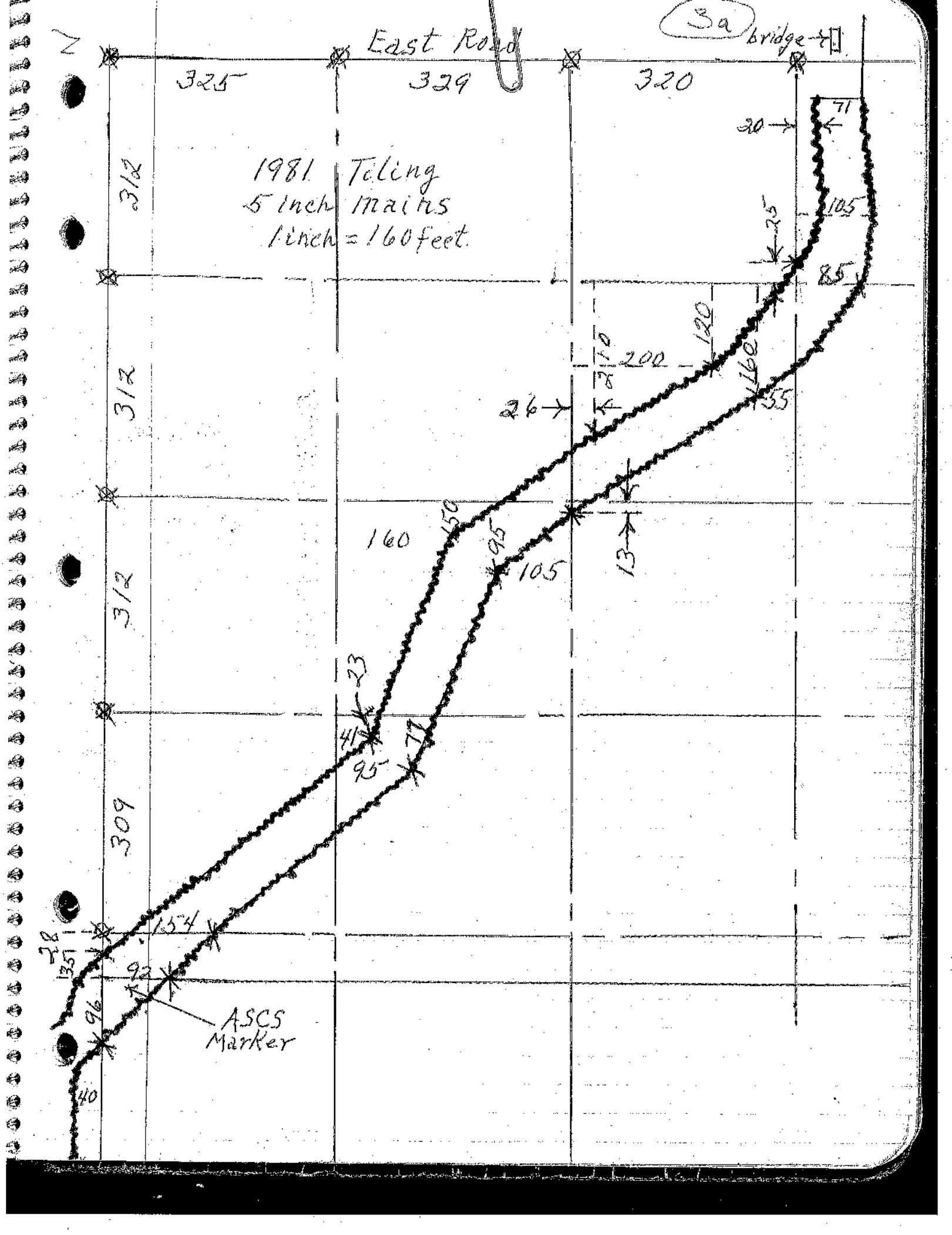
92

154

ASCS
Marker

40

N



3a bridge →

East Road

325 329 320

1981 Tiling
5 inch matts
1 inch = 160 feet.

312

312

312

309

28
351

96

92

154

ASCS
Marker

40

23

41

95

160

150

95

105

26

210

200

120

160

55

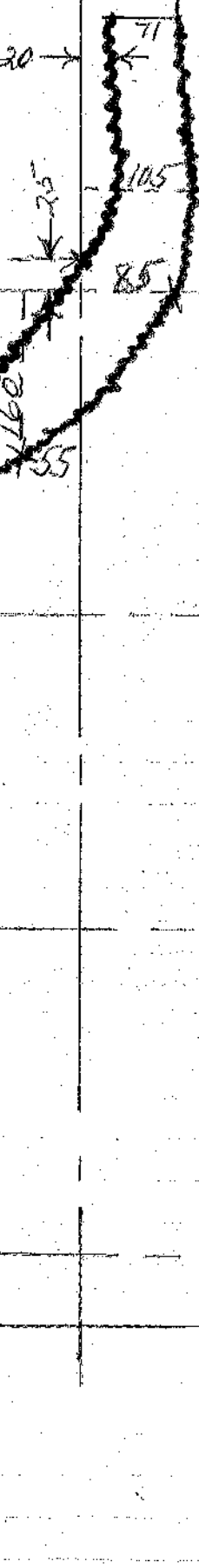
13

30

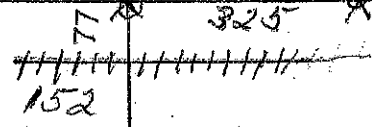
71

105

85



North 80:
1981 Tile
1 inch = 264 feet

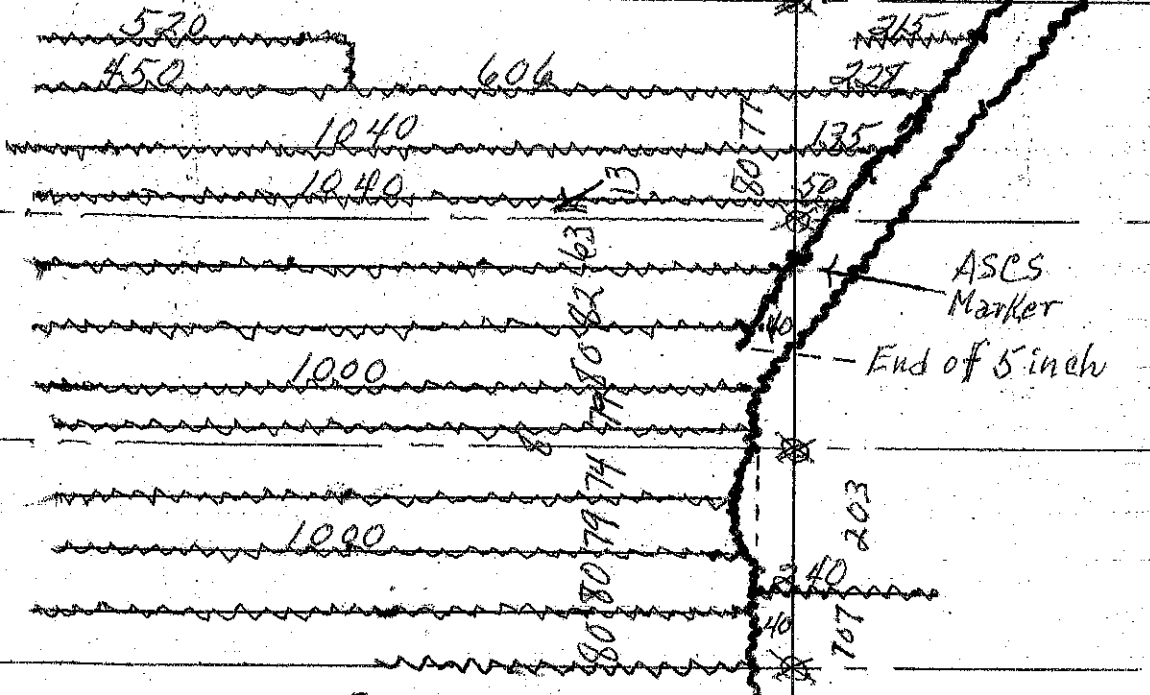


North Line

309

312

310



Well *

312 - 312

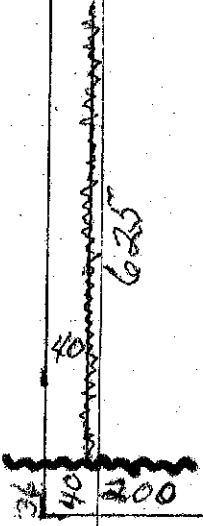
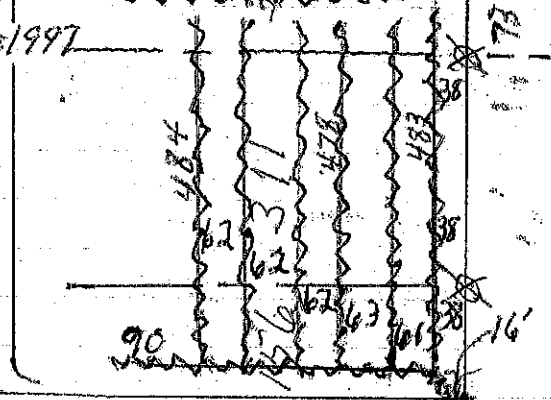
ASCS Marker

End of 5 inch

203
240
767

End of 5 inch

added Apr. 1997



WEST 1/2 of NORTH 80

North Line

WEST PORTION

North 80:
1981 Tile
1 inch = 264 feet

W 80



325

152

312 312 312

well *

520
450

606

315
278

1040
1040

80 77

135

ASCS Marker
End of 5 inch

1000

63 13

309

312

310

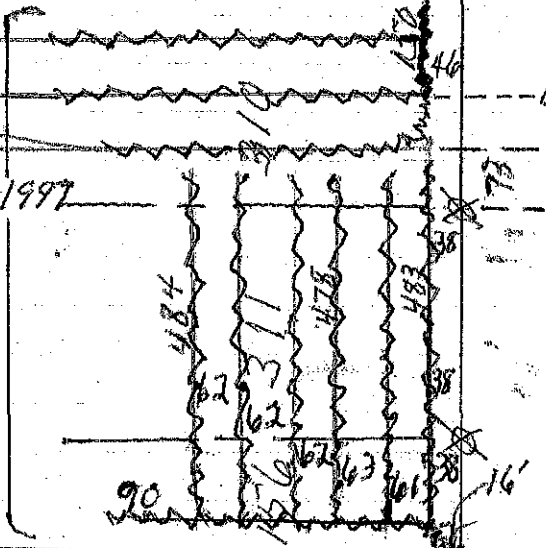
1000

80 80 79 74

240 203
101

625

added Apr. 1997



End of 5 inch

73

90

16'

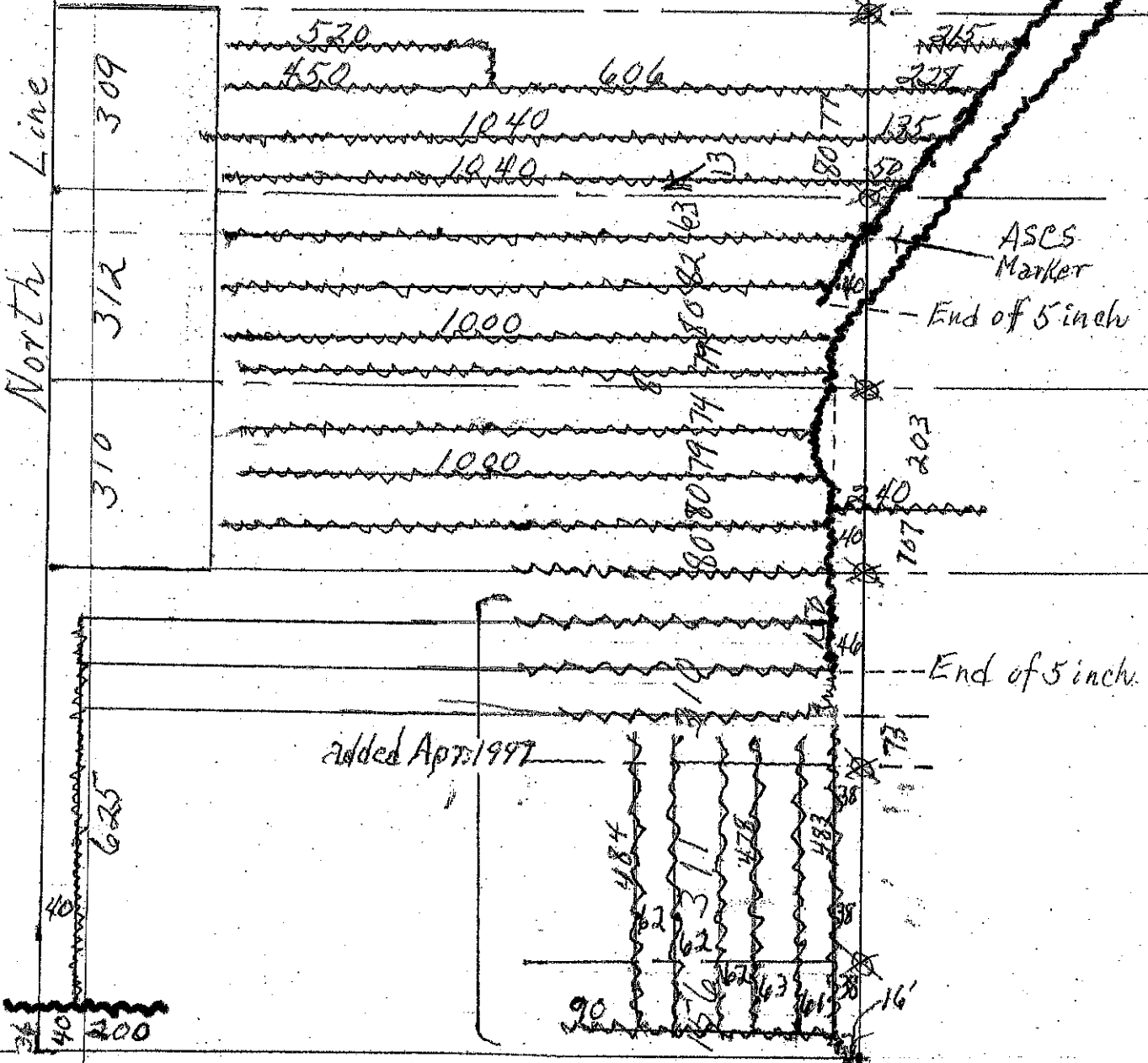
40
200

WEST 1/2 of NORTH 80
EAST 1/2 of NORTH 80

North Line

North 80:
1981 Tile
1 inch = 264 feet

WEST PORTION



well*

ASCS Marker

End of 5 inch

End of 5 inch

added Apr 1997

4

East Road

N 80

west portion

North 80:
1981 Tile

1 inch = 264 feet

WEST 1/2 North 80
North Line
EAST 1/2 North 80

No TILE 2.4 AC

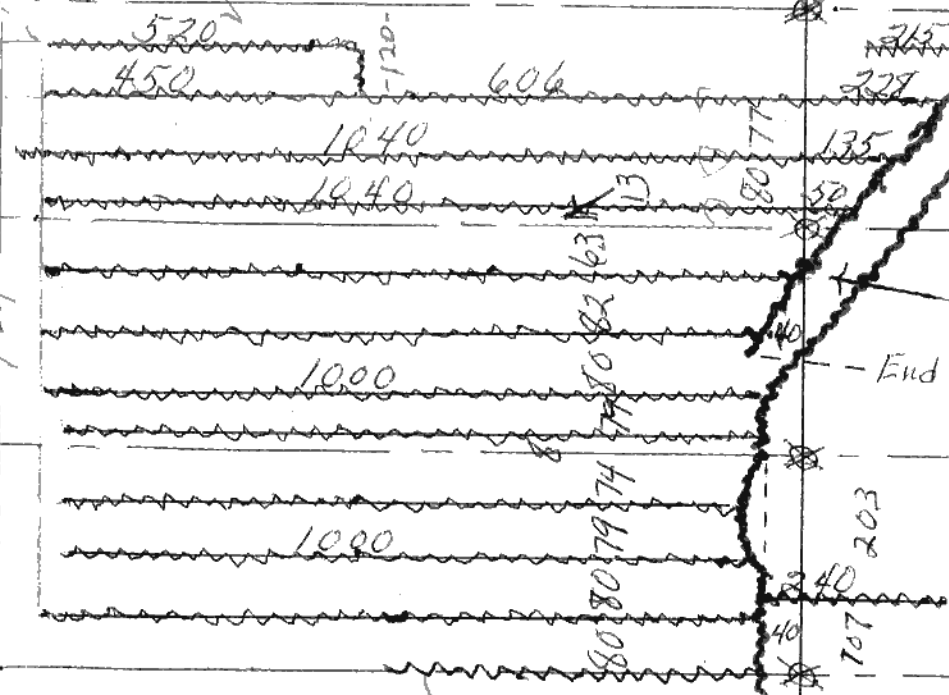
Well *

325

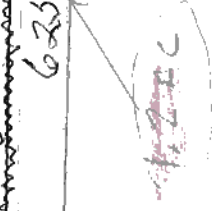
152

312
312
312
312

132
310
312
309
924



added Apr 1997



TOTAL ACRES FILED

1.2
4.2
23.8
28.2

MAR 29-08

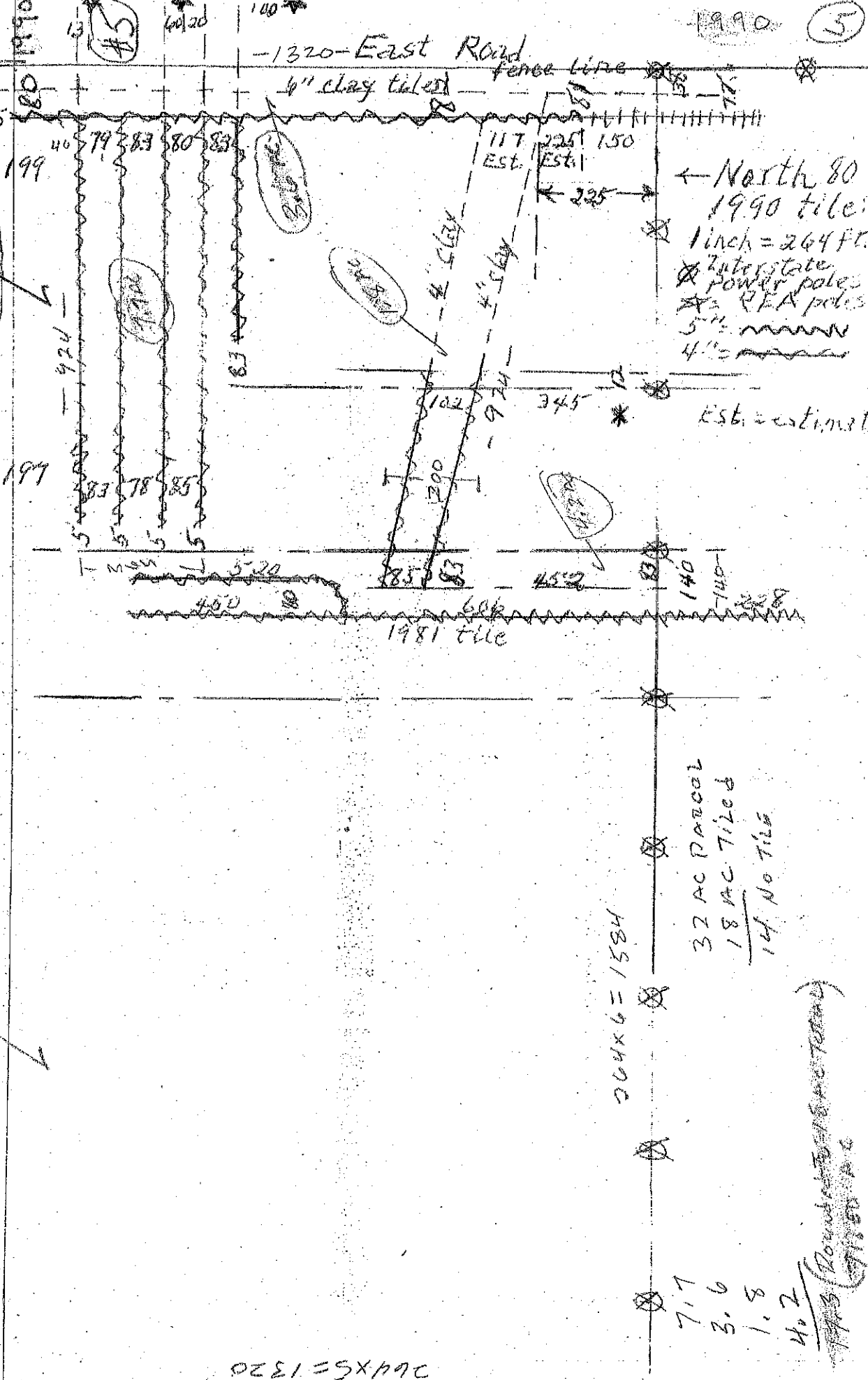
East 1/2 North 80

1.320 x 1.540 = 18 AC PARCEL North

Line

1056 x 1320 = 32 AC PARCEL

1990



← North 80
1990 tile:
1 inch = 264 ft.
Interstate power poles
REA poles
5" ~~~~~
4" ~~~~~

32 AC PARCEL
18 AC Tiled
14 AC No Tile

7.17
3.6
1.8
4.2

1443 (Down to 1/2 AC Parcel)
716.5 P.C.

264 x 5 = 1320

264 x 6 = 1584

(3a) bridge

East Road

325 329 320

1981 Tiling
5 inch matrix
1 inch = 160 feet

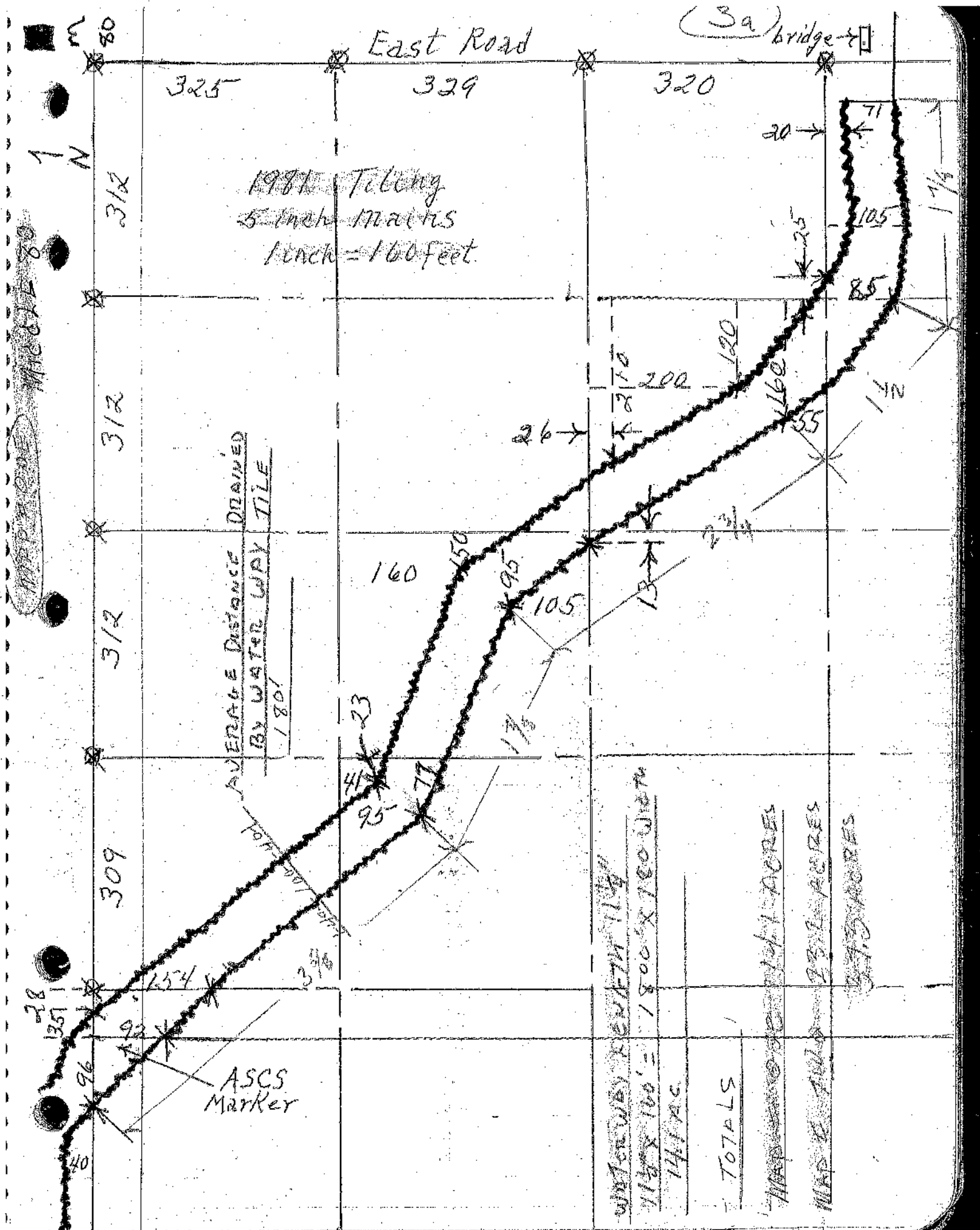
AVERAGE DISTANCE DRAINED
BY WATER WPLY TILE
180'

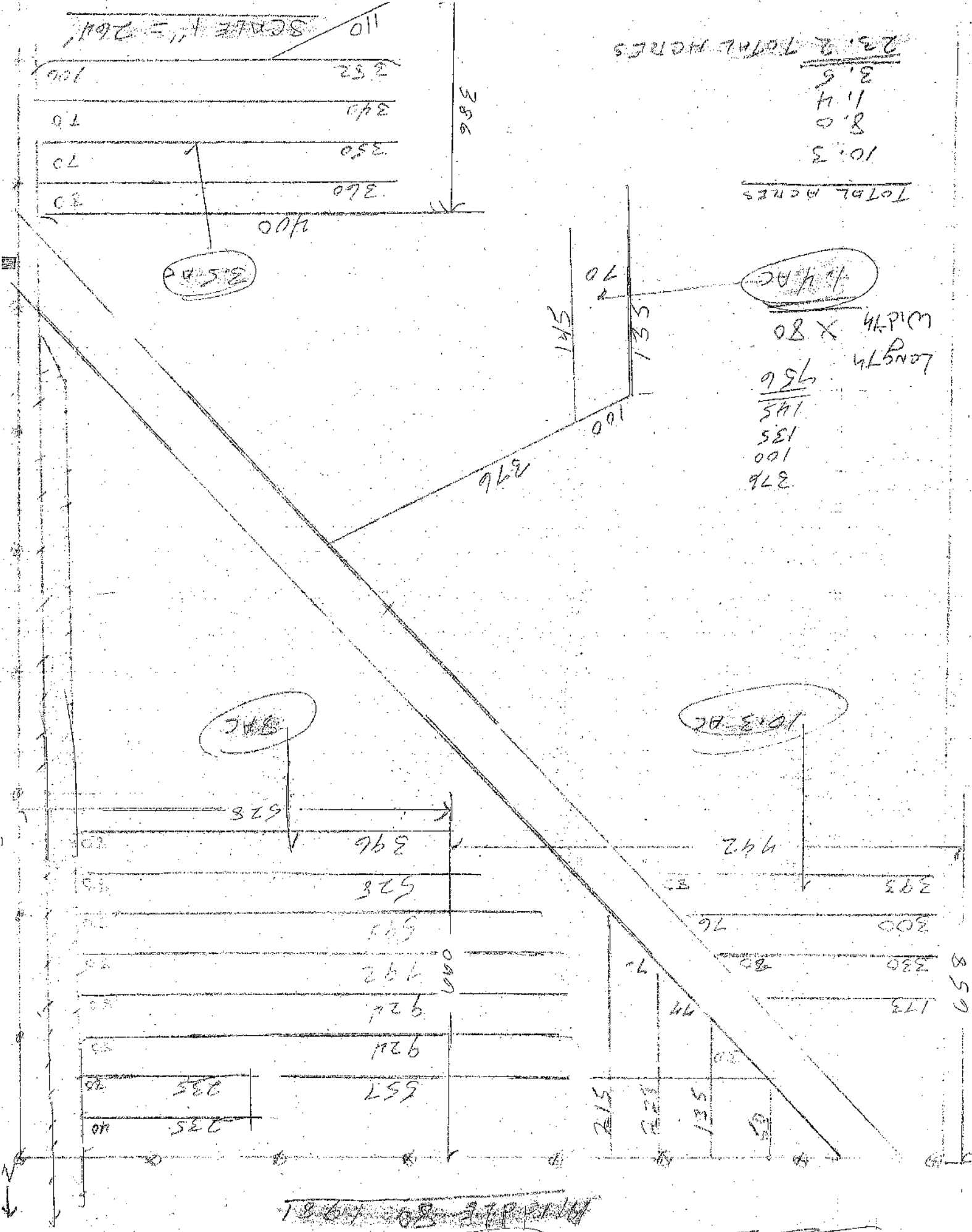
ASCS
Marker

WATER WPLY LENGTH 1134'
1134' x 160' = 1800' x 180 WPL
1411 AC

TOTALS

~~MAP SHOWS 1411 ACRES~~
MAP 2 TULO 237.1 ACRES
377.5 ACRES





23.2 TOTAL ACRES
 3.5
 1.4
 8.0
 10.3
 TOTAL ACRES

4.4 AC
 08 X 80
 LENGTH
 956
 145
 135
 100
 376

8.4 AC
 10.3 AC

SCALE 1" = 200'

110	352
70	340
70	350
30	360
400	

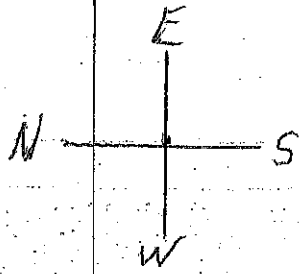
393	942
300	76
230	80
173	74

628	396
528	
541	
921	
921	
557	
235	
235	

MAP # TWO
 1981

ONE EACH = 200'

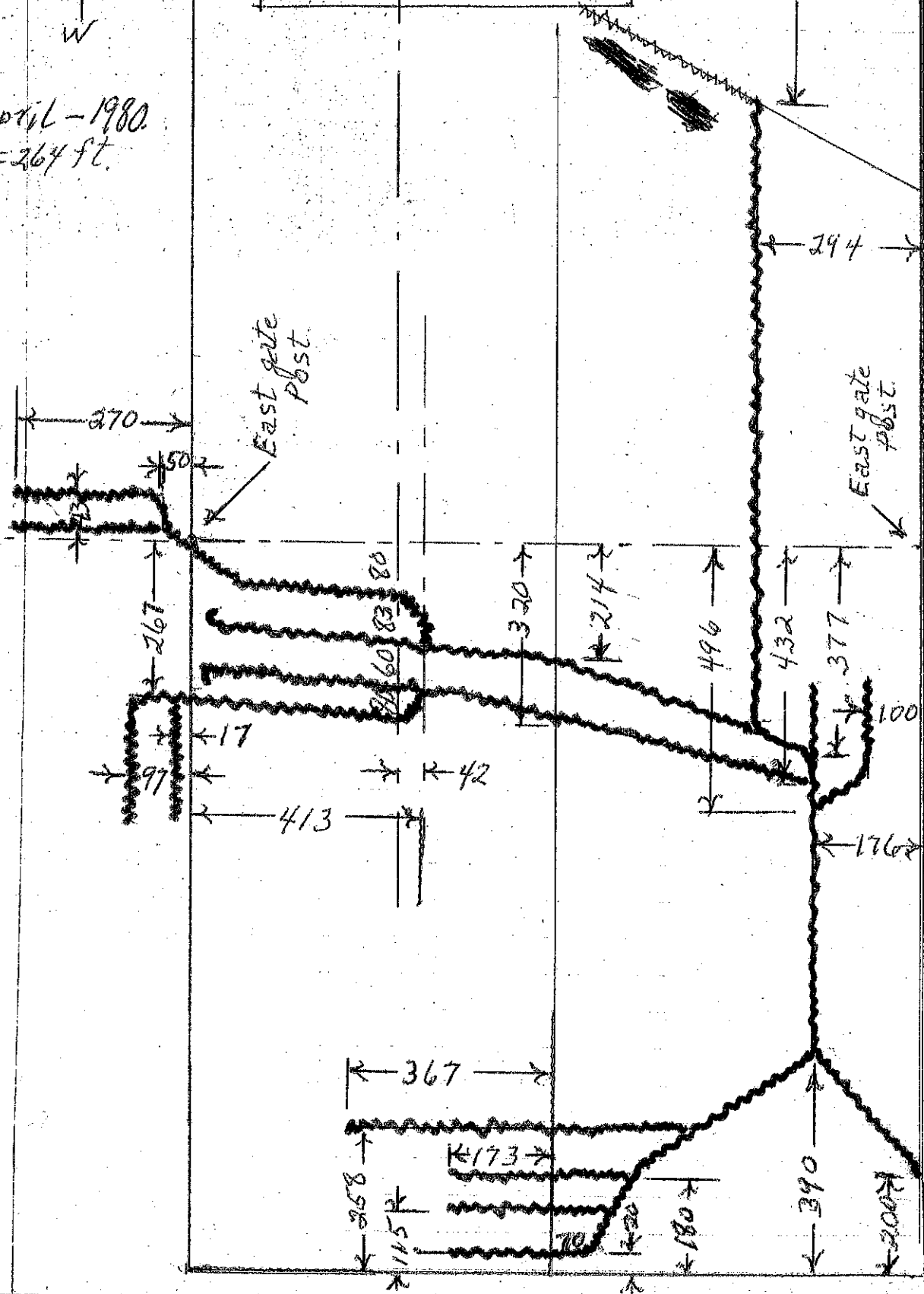
MAR 29-08



Buildings.
 Silo

(2)

April - 1980
 1 inch = 264 ft.

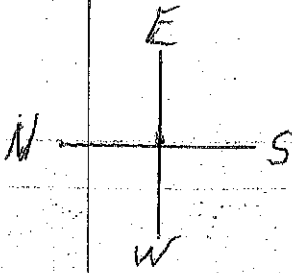


South Road

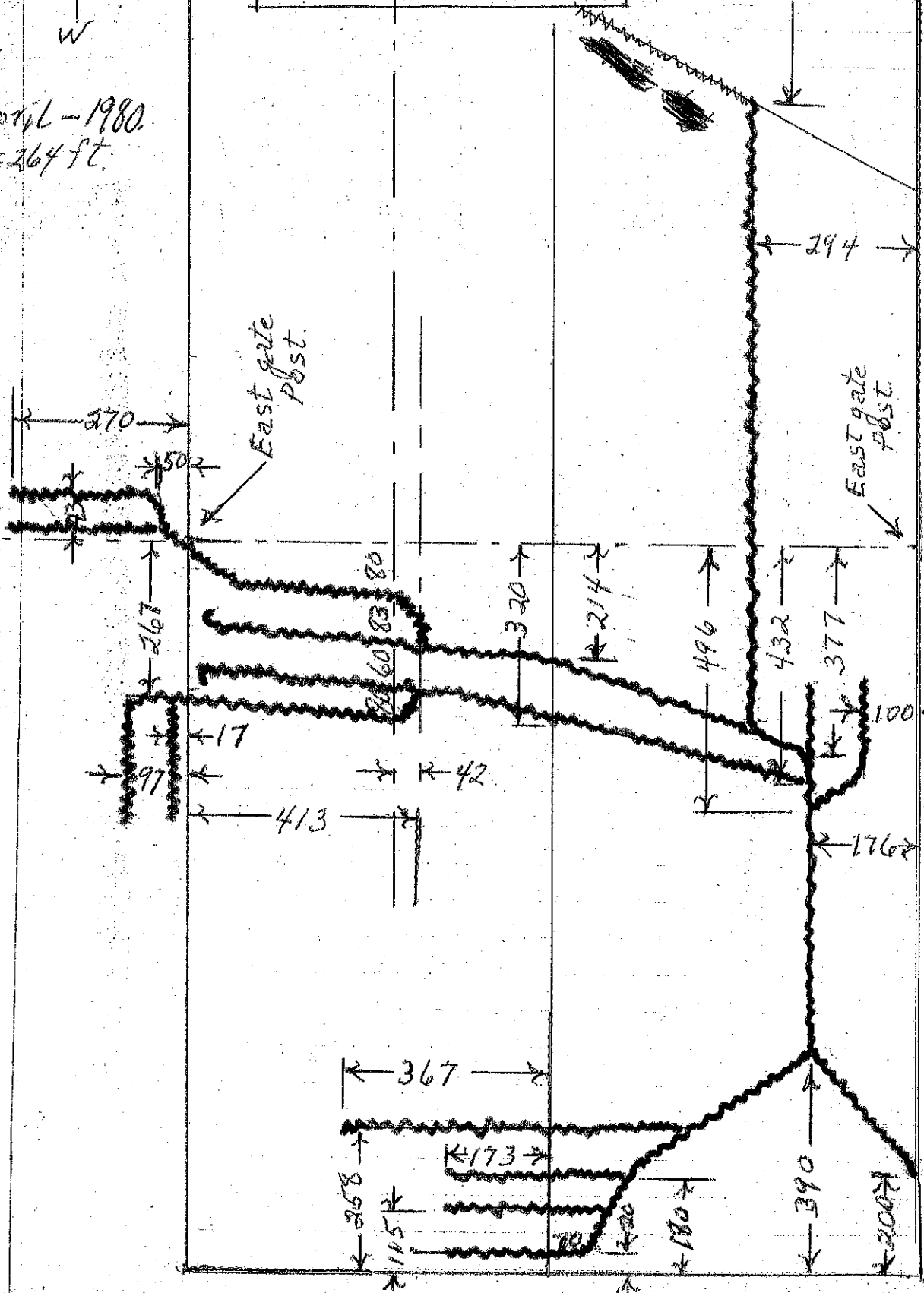
Buildings.

silos

2



April - 1980
 1 inch = 264 ft.



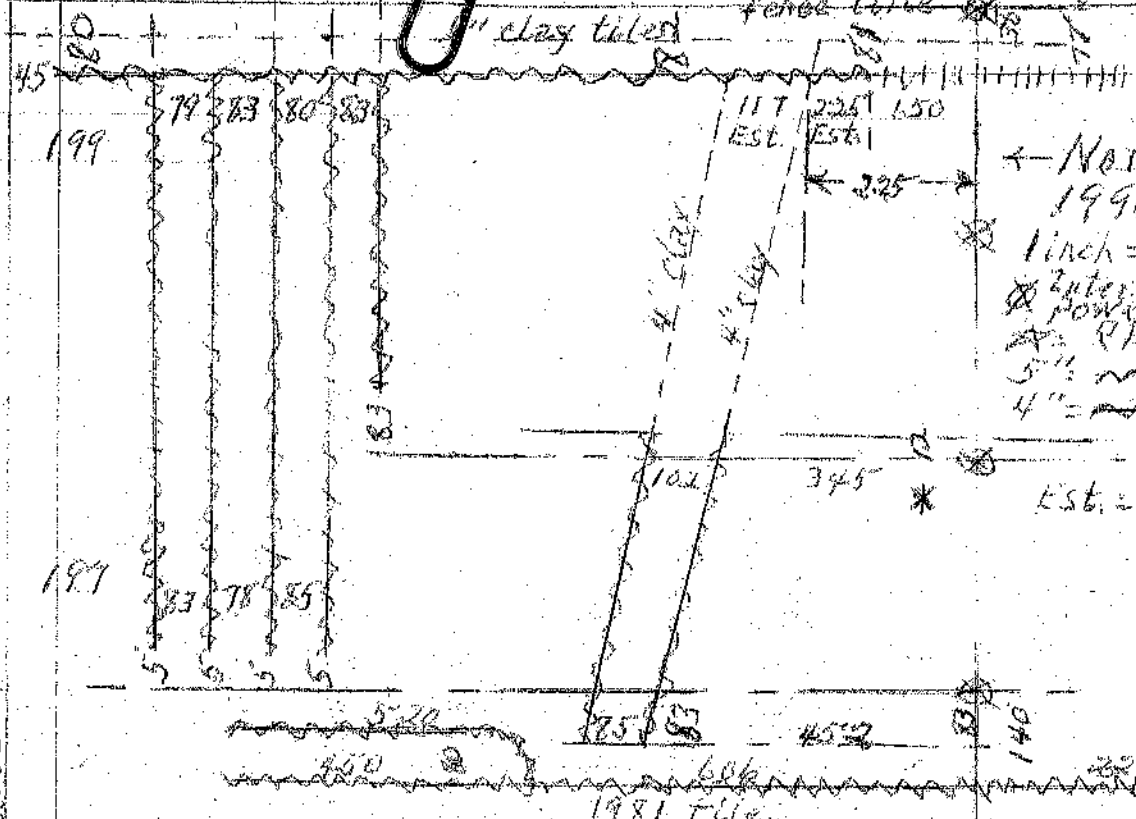
1990

(5)

East Road

4" clay tiles

fence line



← North 80
 1990 tile:
 1 inch = 264 ft.
 X Interstate
 power pole
 X PTA poles
 5" ~~~~~
 4" ~~~~~

Est. = estimate

North Line

61426 → Power Poles
 1023

199
 197
 79 83 80 83
 83
 83 78 85

117 Est.
 225 Est.
 150

← 225 →

102
 345

5' 20"
 450
 175
 606
 4532
 140
 228
 1981 tile

X
 X
 X
 X
 X

80

32 AC EAST 1/2

North Line

NORTH 80
48 AC WEST 1/2

done to rise
SCALE 1/2

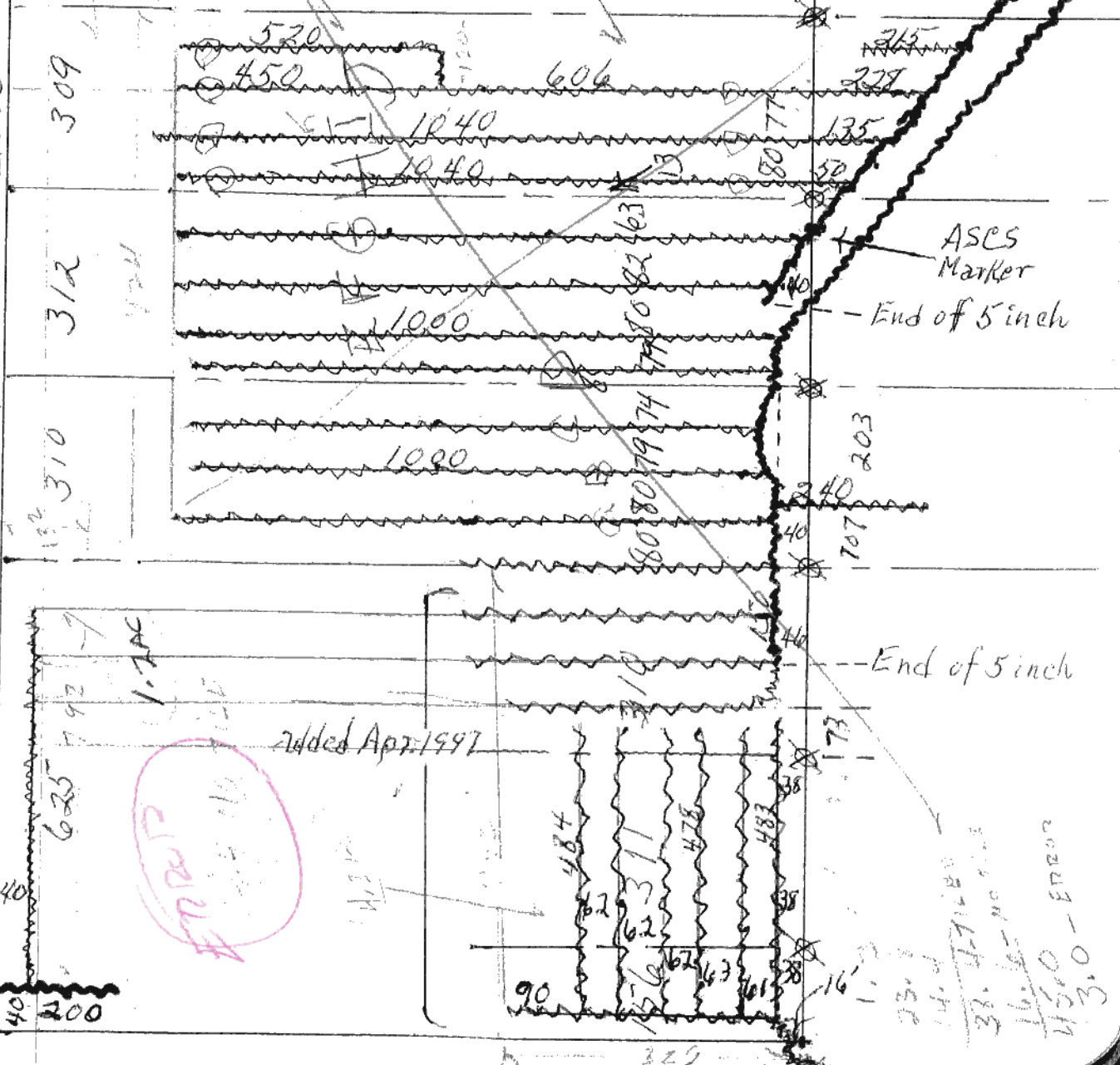
NO TILE

North 80:
1981 Tile

1 inch = 264 feet

77 325
152

Well *



ASCS
Marker
- End of 5 inch

-- End of 5 inch

added Apr 1997

792
1.7 AC

1.1
23.1
14.1
33.1
16.1
45.0 - ERROR
3.0

7

