

CHARITABLE REMAINDER TRUST FARM EQUIPMENT

AUCTION



2012 JOHN DEERE 8335RT

2013 JOHN DEERE S660

35518 50TH STREET
JANESVILLE, MINNESOTA

AUCTIONEER'S NOTE: After a lifetime of farming, Rick & Connie have decided to retire and offer their fleet of well-maintained, field-ready, shedded farm equipment. Online bidding available!

RICK & CONNIE HOEHN, (507) 317-4610

EQUIPMENT PREVIEW:
JUNE 5 FROM 9AM - 4PM



THURSDAY, JUNE 12 | 11AM CDT 2025

SCAN TO BID!
MORE ITEMS LISTED ONLINE!



2011 CASE IH MAGNUM 290



2005 CASE IH MX230



2017 DRAGO 8-22



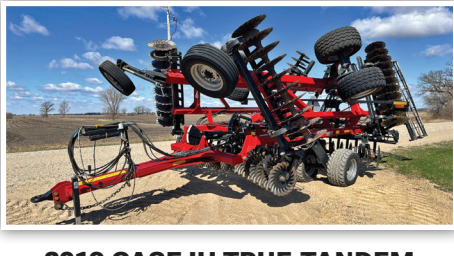
2009 JOHN DEERE 625F



CASE IH 1200



HARDI NAVIGATOR 1100



2019 CASE IH TRUE-TANDEM
335 BARRACUDA



BRENT 782



HOULE 7300



2007 HOULE



1999 FREIGHTLINER FLD120



1999 TIMPTE SUPER HOPPER



1987 FORD L9000



2014 BROCK SUPERB SQ28



2012 LEEAGRA 475-DT



2012 JOHN DERE GATOR XUV 855D

FINANCING BUILT AROUND YOU.



Let us help you secure the funding you need to thrive in today's competitive market. Scan the QR code for more!



Financed By Northland Capital



**STEFFES GROUP
REPRESENTATIVE
LUCAS KRACHT,
(507) 993-4105**



SteffesGroup.com | (320) 693-9371
Steffes Group, Inc., 23579 MN-22, Litchfield, MN 55355



All items sold as is where is. Payment of cash, check, or credit card must be made sale day before removal of items. Statements made auction day take precedence over all advertising. Additional fees may apply. Titles will be mailed. Canadian buyers need a bank letter of credit to facilitate border transfer.