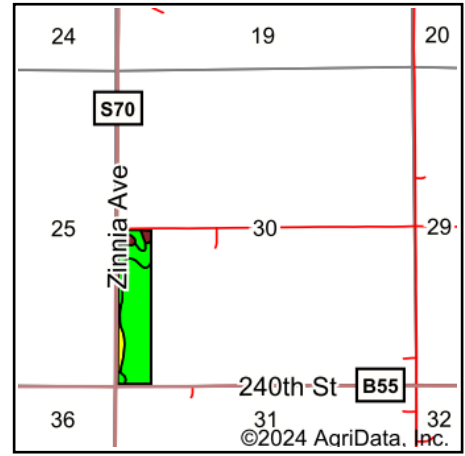


Soils Map



State: **Iowa**
 County: **Floyd**
 Location: **30-95N-18W**
 Township: **Rockford**
 Acres: **32.5**
 Date: **10/23/2024**



Maps Provided By:
surety
 CUSTOMIZED ONLINE MAPPING
 © AgriData, Inc. 2023 www.AgriDataInc.com



Area Symbol: IA067, Soil Area Version: 29

Code	Soil Description	Acres	Percent of field	CSR2 Legend	Non-Irr Class *c	CSR2**	CSR	
631	Limecreek silty clay loam, 0 to 2 percent slopes	22.26	68.6%		I	96	87	
613B	Rosfield silt loam, 2 to 5 percent slopes	4.76	14.6%		Ile	85	78	
217B	Ripon silt loam, 30 to 40 inches to limestone, 1 to 5 percent slopes	1.83	5.6%		Ile	58	79	
612D2	Mottland loam, 9 to 14 percent slopes, moderately eroded	1.76	5.4%		IVe	28	38	
394C	Ostrander loam, 5 to 9 percent slopes	1.41	4.3%		IIIe	83	69	
377	Dinsdale silty clay loam, 0 to 2 percent slopes	0.48	1.5%		Ie	99	95	
Weighted Average						1.45	88	81.9

**IA has updated the CSR values for each county to CSR2.

*c: Using Capabilities Class Dominant Condition Aggregation Method