

Lewis County, Missouri LAND AUCTION

TIMED ONLINE | Opens: Tuesday, September 19
CLOSES: TUESDAY, SEPTEMBER 26 | 1PM CDT 2023



69.82± Deeded Acres

La Belle, Missouri

Located 4.2 miles north of La Belle on State Highway K.

Auctioneer's Note: Explore and enjoy all the possibilities this property provides, including income producing tillable land, a pond, and timber with parts bordering Fabius River. Recreational opportunities abound along with tillable income.

Approx. 45.5 acres tillable.

Majority soil types: Chariton, Gifford, Leonard & Kilwinning.

Located in Sections 8 & 9, Reddish Township, Lewis County, Missouri.

Farm is currently rented, lease details to be listed online.

Not included: 2023 crops.



PAT & DONNA CRAMER

Closing & Title Company - Oak Hills Title Company, 309 Lewis Sreet, Canton, MO 63435
Contact Tim Meyer of Steffes Group, 319.385.2000 or 319.750.1233

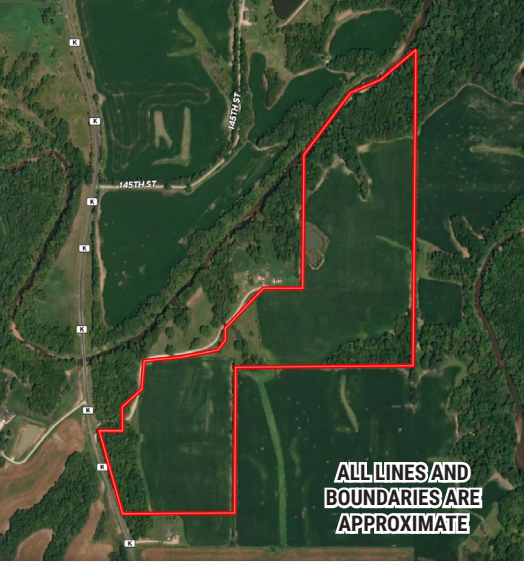


319.385.2000 | SteffesGroup.com

Steffes Group, Inc., 2245 East Bluegrass Road, Mt. Pleasant, IA 52641



Licensed to sell Real Estate in IA, MN, ND, SD, MO, IL, WI, NE & MT. Announcements made the day of sale take precedence over advertising.



Terms: This online auction will have a \$1,000 buyer's premium. At the conclusion of the auction, the winning bidder will be required to sign a real estate sales contract and pay ten percent (10%) of the purchase price as a non-refundable down payment, payable to Oak Hills Title Company which shall hold the money in escrow until closing. The balance of the purchase price will be due at closing which will take place at Oak Hills Title Company, 309 Lewis St., Canton, MO on or before November 1, 2023.

Landlord's Possession: Will be given at time of closing (Subject to tenant's rights on the tillable land).



Steffes Group, Inc.
2000 Main Avenue East
West Fargo, ND 58078-2210

PRSTD MKTG
US POSTAGE
PAID
FARGO, ND
PERMIT #472

CLOSES: TUESDAY, SEPTEMBER 26 | 1PM CDT 2023



LAND AUCTION
Lewis County, Missouri