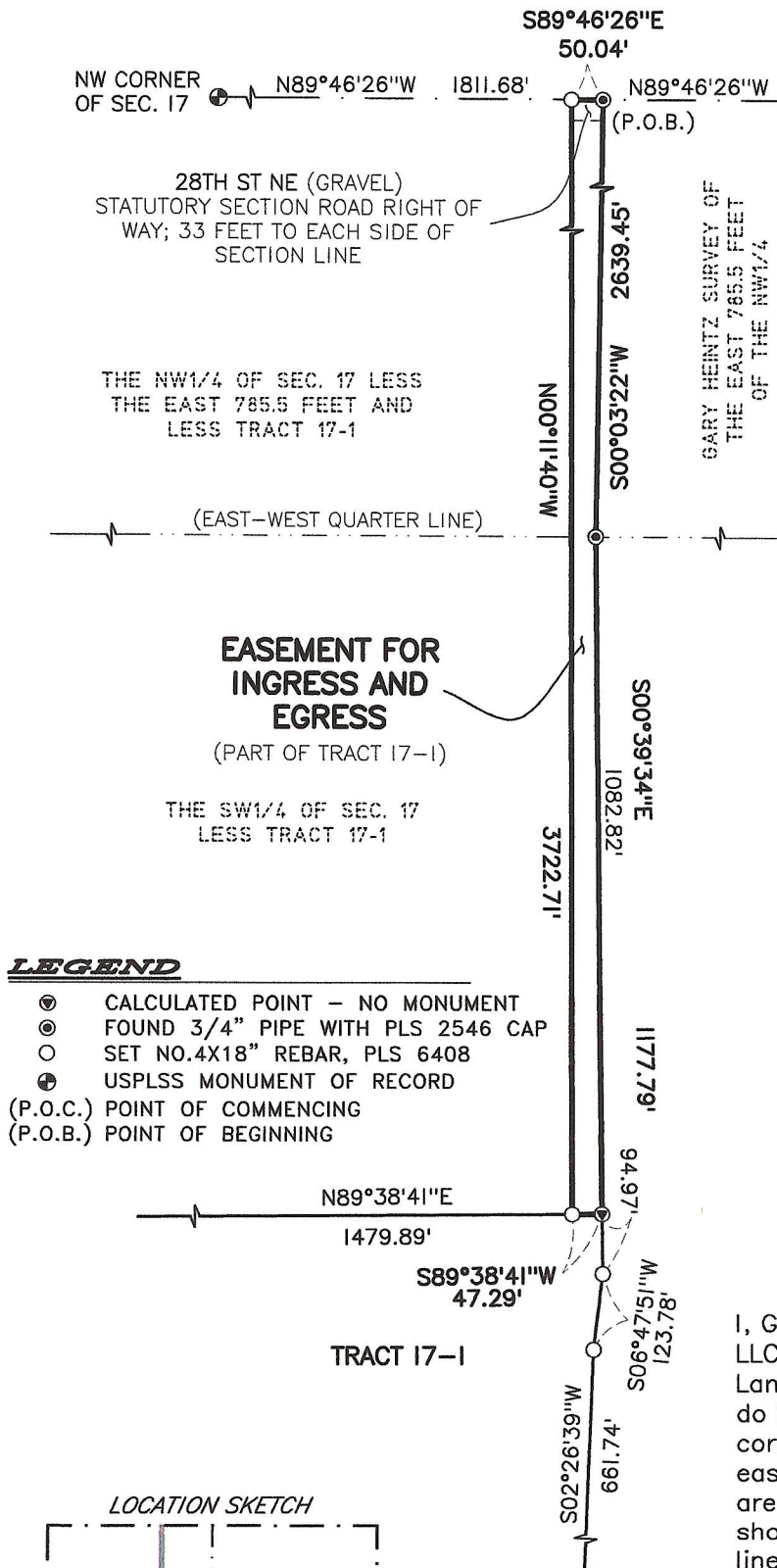


EASEMENT EXHIBIT

LOCATED WITHIN THE WEST HALF OF SECTION 17, TOWNSHIP 150
NORTH, RANGE 71 WEST OF THE FIFTH PRINCIPAL MERIDIAN,
FRAM TOWNSHIP, WELLS COUNTY, NORTH DAKOTA



EASEMENT BOUNDARY DESCRIPTION
COMMENCING at the North Quarter Corner of Section 17; Thence N89°46'26"W on and along the North Line of the Northwest Quarter a distance of 785.64 feet to a found 3/4" iron pipe set by PLS 2546 for the NW Corner of the East 785.5 feet of the NW 1/4 and the point of beginning; Thence S00°03'22"W on the monumented West Line of the East 785.5 feet of the NW 1/4 a distance of 2639.45 feet to a found 3/4" iron pipe set by PLS 2546 for the SW Corner of the East 785.5 feet of the NW 1/4; Thence S00°39'34"E a distance of 1082.82 feet; Thence S89°38'41"W a distance of 47.29 feet; Thence N00°11'40"W a distance of 3722.71 feet to the North Line of the Northwest Quarter of Section 17; Thence S89°46'26"E on and along said North Line a distance of 50.04 feet to the point of beginning and the end of this easement boundary description.

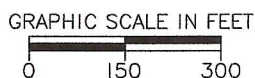
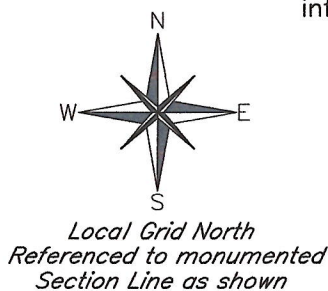
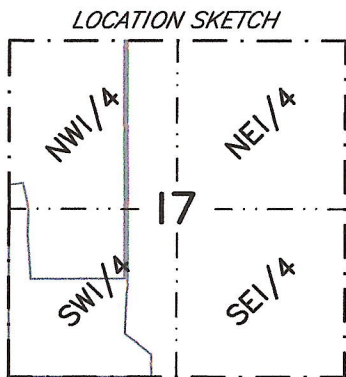
LEGEND

- CALCULATED POINT - NO MONUMENT
 - FOUND 3/4" PIPE WITH PLS 2546 CAP
 - SET NO.4X18" REBAR, PLS 6408
 - USPLS MONUMENT OF RECORD
- (P.O.C.) POINT OF COMMENCING
(P.O.B.) POINT OF BEGINNING

THE SW1/4 OF SEC. 17
LESS TRACT 17-1

SURVEYOR'S CERTIFICATE

I, Gregory J. Rich, Tamarac Land Surveying, LLC, Jamestown, North Dakota, a Professional Land Surveyor in the State of North Dakota, do hereby certify that this plat is a true and correct representation of the described easement boundary, and that all distances are correct, the monuments are in place as shown on the plat and the outside boundary lines are correctly designated as shown on the plat to the best of my knowledge, information and belief.



Preliminary

TLS Project No. 25-00-013

TAMARAC
LAND SURVEYING, LLC
www.tamaraclandsurveying.com