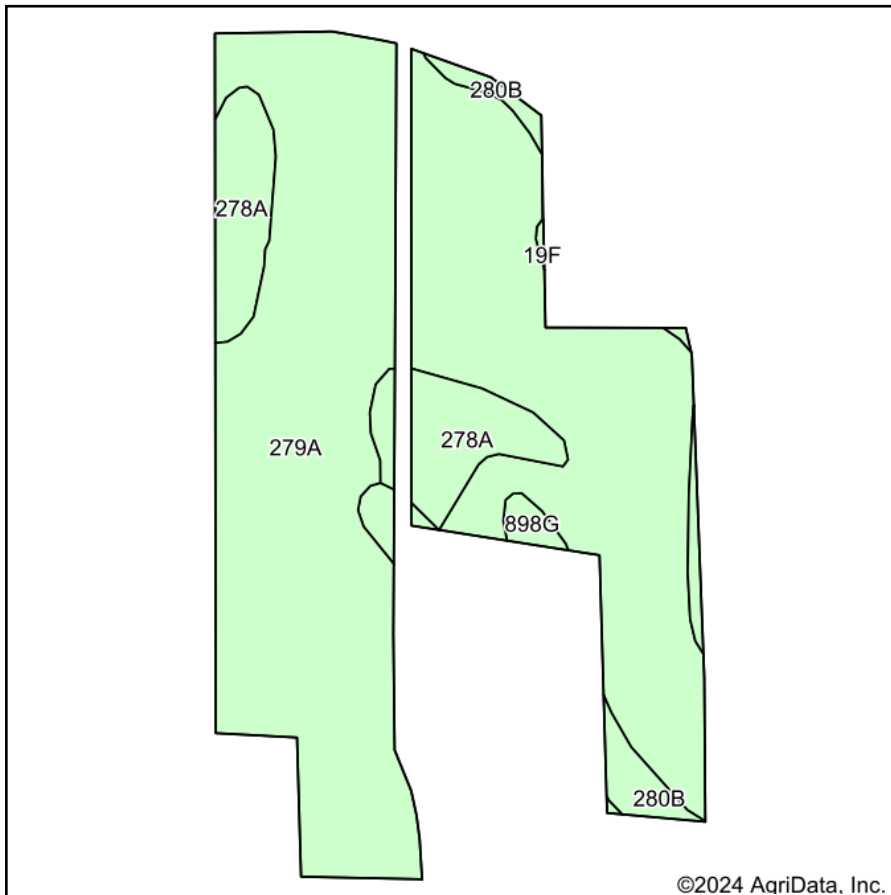
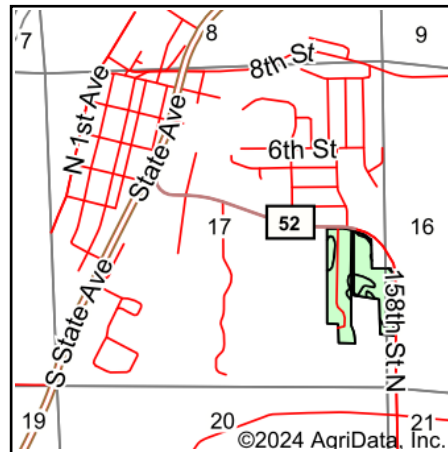


Soils Map



Soils data provided by USDA and NRCS.



State: **Illinois**
 County: **Rock Island**
 Location: **17-18N-1E**
 Township: **Hampton**
 Acres: **30.18**
 Date: **12/5/2024**



Area Symbol: IL161, Soil Area Version: 20

Code	Soil Description	Acres	Percent of field	Subsoil rooting ^a	Corn Bu/A	Soybeans Bu/A	Wheat Bu/A	Oats Bu/A ^b	Sorghum ^c Bu/A	Grass-legume ^e hay, T/A	Crop productivity index for optimum management
279A	Rozetta silt loam, 0 to 2 percent slopes	25.46	84.4%	FAV	164	51	65	84	0	5.30	120
278A	Stronghurst silt loam, 0 to 2 percent slopes	3.15	10.4%	FAV	171	54	66	87	0	5.30	125
**280B	Fayette silt loam, glaciated, 2 to 5 percent slopes	0.99	3.3%	FAV	**164	**52	**65	**83	0	**5.20	**120
**898G	Hickory-Sylvan silt loams, 35 to 60 percent slopes	0.52	1.7%	FAV	**65	**22	**26	**30	0	**2.00	**48
**19F	Sylvan silt loam, 18 to 35 percent slopes	0.06	0.2%	FAV	**109	**35	**43	**50	0	**2.90	**80
Weighted Average					162.9	50.8	64.4	83.3	*	5.2	119.2

Table: Optimum Crop Productivity Ratings for Illinois Soil EFOTG are sourced from Bulletin 811 calculated Map Unit Base Yield Indices, and adjusted (Adj) for slope, erosion, flooding, and surface texture. Publication Date: 02-08-2023

Crop yields and productivity (B811 EFOTG) are maintained at the following USDA web site: 2023 Illinois Soil Productivity and Yield Indices: <https://efotg.sc.egov.usda.gov/#/state/IL/documents/section=2&folder=52809>

** Base indexes from Bulletin 811 adjusted for slope, erosion, flooding, and surface texture according to the II. Soils EFOTG

^b Soils in the southern region were not rated for oats and are shown with a zero "0".

^c Soils in the northern region or in both regions were not rated for grain sorghum and are shown with a zero "0".

^e Soils in the well drained group were not rated for grass-legume and are shown with a zero "0".