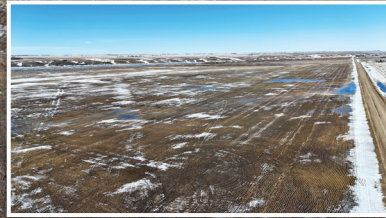
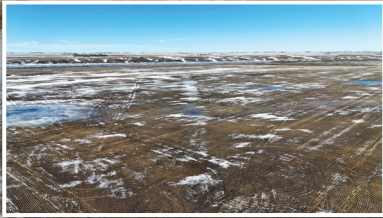


# LAND AUCTION

TIMED ONLINE

## Craik RM #222



 **Craik, Saskatchewan**

**BIDDING OPENING: FRIDAY, MARCH 20**

**CLOSING: WEDNESDAY, MARCH 25 | 10AM CST 2026**

### LAND LOCATED:

*From the Craik north access road, head north 1/4 mile to property on east side of the road.*

Great opportunity to add 160± acres of agricultural land to your land holdings. Situated along Highway 11 and the Craik reservoir, this land is available to farm for the 2026 growing season.

### 160± ACRES - RM OF CRAIK #222

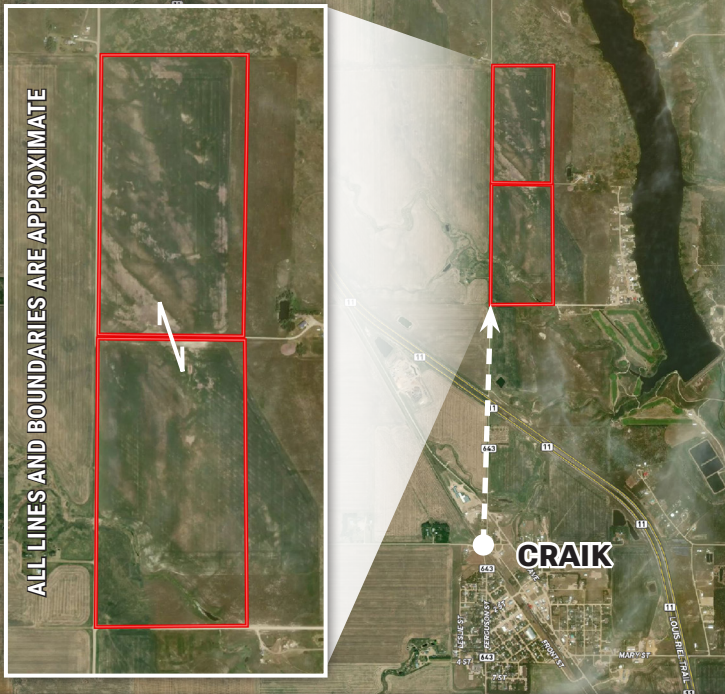
#### Description:

W1/2NW1/4 Lsd 12 & 13 Section 26-24-28 W2 & PT SW Lsd 4 & 5 Section 26-24-28 W2

**Titled Acres: 160±**

#### Crop Rotation:

Lentils 2023, Canola 2024, Wheat 2025



## WILLIAM "BILL" MCCONWELL & JUDY YAMNIUK



**TERMS:** All sales will be deemed to close 30-days from the date bidders are notified of acceptance unless otherwise agreed with the seller, and bidders must deposit ten percent (10%) of the winning bid with the solicitors for the seller within 1 business day after the closing of this auction. *See complete terms & conditions at SteffesGroup.com.*

### STEFFES REPRESENTATIVE

**CORY SCHAPANSKY,**  
**(306) 852-7294**



**SteffesGroup.com | (306) 873-5488** |         

Steffes Auctioneers, Lot 5 Hwy #3 East, Tisdale, SK S0E 1T0

Statements made online take precedence over all advertising.  
Bruce Schapansky Auctioneers, Inc. DBA Steffes Auctioneers | Bruce Schapansky PL: #314037

